

# SOUTH JERSEY BEEKEEPERS

January-February 2023 Vol. 16 Issue 1



As I write this next to my wide open front door, enjoying the warm weather, I am thinking of my bees that I watched yesterday. I didn't have time for a peek, but I quickly gave them a lift to feel their weight. January is the first month of uncertainty for me...have found that this month and March are the deadliest. A cold snap for too long and they starve because they can't move to their honey stores. Too warm and they eat it too fast. Lift your bees, feel their weight. Many beekeepers will say better to put emergency feed on the hive and toss it in spring then have them starve. Some beekeepers will put on food before the end of December. Have they gone through it yet?

My chores in February include repairing and painting hive boxes. I bought a gallon of returned exterior paint last fall at a local paint store for \$5! If you don't see the discounted paint at your paint store or the big box stores, just ask. Our garage is almost finished repairs and I hope I can keep a small section for my bees. Garage real estate is hard to come by in a family with 6 boys.

All in all, I am looking forward to this year. May all my fellow beekeepers have a wonderful year and lots of honey!

**Beth Ann Hall, President, South Jersey Beekeepers Association**



## Upcoming Schedule of Events

**January 10, 2023 SJBA Zoom Meeting,**

**Local Queen rearing by John Gaut, EAS master beekeeper**

<https://us02web.zoom.us/j/85456293570?pwd=bnk4b0w0bEo3YlBwcGRnYnJVSHBxZz09>

**January 24, 2023 New Jersey Honey Show, see next page for details**

**February 18, 2023 NJBA Winter meeting  
Bordentown-Eco Center**



**March 25, 2023**

**SJBA banquet at Martin's**

**Guest speaker—Tim Schuler on Beekeeping in Malawi**



**April 8, 2023 Chelsea Abegg on fungicide effects on honey bees**

**\*\*Post Covid Schedule —2023 onward\*\***

**—Winter schedule 2nd Tuesday of month—**

**—Non-winter schedule 2nd Saturday of month—  
April to October, location will vary**

**—Field days in summer— in-hive colony checks**





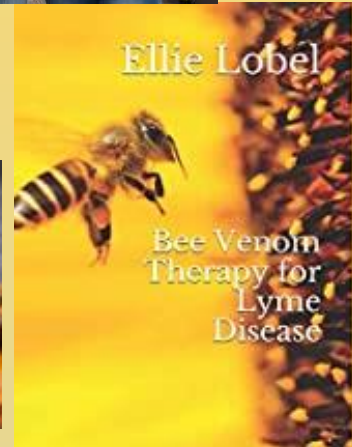
# Meetings (Past/future)



## <—Recap

**November 12, 2022 Bee Venom Therapy for Lyme's disease—  
with Nicole Mazzitelli and friends**

**December 6, 2022  
SJBA members honey and honey baked goods tasting  
SJBA board elections**



Photos taken by: Nicole Mazzitelli, Denise Dietrich, and internet

## NEW JERSEY HONEY SHOW

**WHO? ANY NJBA MEMBER CAN ENTER HONEY, WAX PRODUCTS, PHOTOS, COSMETICS, MEAD**

**WHAT? FRIENDLY COMPETITION OF LOCALLY PRODUCED BEE HIVE PRODUCTS**

**WHERE? TRENTON STATE HOUSE, 125 WEST STATE ST., TRENTON**

**WHY? TO MASTER THE PRODUCTION OF QUALITY BEE HIVE PRODUCTS AND TO SHOWCASE HONEY BEE PRODUCTS TO STATE OFFICIALS**

**WHEN? JANUARY 24TH, ENTRIES NEED TO ARRIVE BY 9:00AM**

**HOW? FOR CATEGORIES, ENTRY FORMS, RULES OF THE HONEY SHOW  
SEE [HTTPS://NJBEEKEEPERS.ORG/ANNUAL%20HONEY%20SHOW.HTM](https://njbeekeepers.org/annual%20honey%20show.htm)**



Internet photos



# Kid's Korner!!!...Show me the honey!!

adapted from ABF Kids and Bees program

1. What is honey? Look up the definition and qualities of honey. Look up its uses.

○ Circle the words/phrases that describe honey

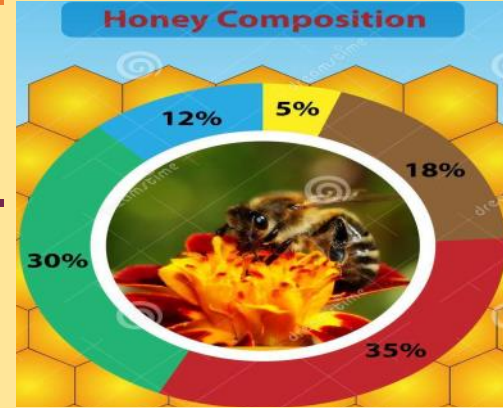
Internet photos and drawings

⊘ XX out the words/phrases that do not apply

Sweet      Color varies from yellow to brown      Made with fats      Sticky  
 25% water      Man-made      Acidic      Sweetened with corn syrup      17-18% water  
 Made by bees      Made from fats      Made by ants      Made with nectar

2. In the circle (at right), match composition to the colors

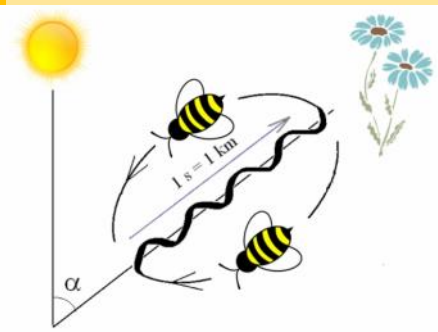
Vitamins/minerals/enzymes      Water  
 Other sugars      Glucose      Fructose



3. What is the process by which bees make honey?

Match the 7 written steps with the 7 pictures and put in order.

- \_\_ House bees place wax capping on finished honey
- \_\_ Forager bees pass honey from their honey stomach to house bees
- \_\_ Forager bees bring back nectar and pollen from the floral source
- \_\_ House bees process it further and then deposit into honey comb
- \_\_ Scout bees tell hive mates of nectar location with waggle dance
- \_\_ Other house bees ventilate the honey to decrease moisture to \_\_\_%
- \_\_ Scout bees find sources of nectar



**Answers:** Honey is sweet, sticky liquid, made by honey bees from nectar of plants. It is yellow to brown, acidic, and less than 18.6% water content. All other descriptors are not applied. Composition (on average): 5% vitamin/minerals, 18% water, 35% fructose, 30% glucose, 12% other sugars. Honey process: 7, 4, 3, 5, 2, 6, 1; picture clockwise from picture below the circle of composition: 3, 5, 6, 1, 7, 2, 4

# Want to be a New Jersey State Honey Queen?!?!

The New Jersey Honey Queen Program is a program for women between the ages of 17- 24 that are associated with beekeeping and/or other agriculture-related areas such as 4-H, FFA, Girl Scouts and Civic Organizations. The New Jersey State Honey Queen will serve as the representative and spokesperson for the New Jersey Beekeepers Association (NJBA) and New Jersey Honey Bee Industry. The primary goal is to educate the community about honey bees, beekeeping, and the honey bee industry, regarding honey bees, products of the hive, and pollination. Applicable qualities of an applicant are 1.) an interest in beekeeping and a willingness to learn, 2.) knowledge of beekeeping, honey bees and products of the hive, 3.) Education: high school and/or some college education. It is a state-level program that is associated with the National level program administered through the American Beekeeping Federation. The program was founded in 1957 by Esther Piechowski, at the grassroots level in Wisconsin, with the intention to raise awareness of honey bees and beekeeping. This program affords young women the opportunity to represent the beekeeping community and industry. These young women gain knowledge of the industry and hone public speaking, education, marketing and related professional skills through presentations at various Trade Shows, School Presentations, County fairs, local fairs, Agriculture Shows, and other promotional events.

The 2023 New Jersey Honey Queen will also have the opportunity to represent New Jersey and compete for National Honey Queen Title in 2024. For more information, please contact

**Joel Medina at [medinaj3151@hotmail.com](mailto:medinaj3151@hotmail.com)**

*Information extrapolated from internet sites*

[https://en.wikipedia.org/wiki/Honey\\_Queen\\_Program](https://en.wikipedia.org/wiki/Honey_Queen_Program)

<https://www.abfnet.org/page/queens>



## **BAKLAVA Recipe**

*from Maria Dever Mendenhall*

### **Ingredients:**

1 package phyllo dough

1 cup butter—melted

### **Nut mixture:**

2 cups walnuts—finely chopped

1/2 cup sugar

1 tsp. cinnamon

### **Sauce [double as needed to saturate pastry]**

1.5 cups sugar

1 TB fresh lemon juice

1 TB honey

3/4 cup water

Cinnamon (optional)

### **Directions:**

- Heat oven to 325deg F; grease a 13" x 9" pan
- Layer and brush 3 sheets of phyllo dough; sprinkle nut mixture; repeat with 1 sheet of phyllo dough, butter, and nut mixture
- When nut mixture is finished, continue with butter layers and phyllo dough. Butter top layer.
- Score top with sharp knife into triangles
- Bake for 1 hour & 15 minutes, until top is golden brown
- While dough is baking, prepare the sauce by heating all ingredients until boiling, stirring. Set aside for 1 hour; Spoon over the hot baklava pastry
- Cool on wire rack; when cool cut into pieces along score lines.



*A Year in New Jersey*  
**Beekeeping**  
*December 2021 through December 2022*

*REMINDERS for January*

**January Beekeeping tasks:**

**\*\*Order packages and nucs for spring.** Businesses that supply packages, nucs, and queens advertise in New Jersey Beekeepers Association (NJBA) and SJBA newsletters

**\*\*Order equipment for spring.** It will need assembly and painting

**\*\*Prepare your entries for the annual state honey show.** The rules and classes can be found on the NJBA website

**\*\*Pay your NJBA dues online at <https://njba38wildapricot.org/> or to your branch treasurer; can register a second branch membership as well**

**\*\*Make sure hive covers are secure.** All your colonies should have weights or straps on the outer covers to keep them on. Between the inner and outer covers place a 1/2" to 3/4" thick block of wood toward the front of the hive. This will slightly raise the outer cover, providing a top entrance and an escape for warm, moist air. If this is in place and the bees have access to it through the hole in the inner cover, you will never have to worry about an entrance blocked by snow. The bees can breathe and leave the hive through the top.

**\*\*Check colonies for food reserves.** Tip the colony to gauge the weight. Try to lift the hive: you should not be able to do that easily this time of year. You can also lift the inner cover briefly and look down between the frames for capped honey. If the hive seems too light or you can't detect any capped honey, supplemental feeding is necessary. See the back pages of the NJBA calendar for recipes and tips.

**\*\*Deadouts:** should have entrances sealed to prevent robbing or be removed from the bee yard until the disease status can be determined. It is recommended to have them checked by the state apiarist for disease. This can be done at your bee yard or at an NJBA branch meeting, so others can learn also. If there is no sign of American Foulbrood (AFB), the frames and boxes can be reused.

**\*\*Register your bee yard now:**

It's time to register your wintering bee yard locations with the NJ Department of Agriculture. If you have not registered before, it is important to register annually for several reasons.

- 1) Epidemiology in the event of a disease outbreak,
- 2) Census numbers—for resource allocation and statistics
- 3) Updated swarm collector and pollinator lists.

<http://www.nj.gov/agriculture/divisions/pi/prog/beeinspection.html>



Please follow the directions. Thank you for helping to maintain a healthy bee industry in New Jersey. If you have never registered, just register as a new beekeeper. If you've registered in the past, you have an AIS number which when entered, along with your last name, will prefill the form.

*A Year in New Jersey*

# Beekeeping

*December 2021 through December 2022*

## February Beekeeping Tasks

**\*\*Register your hives.** The state Department of Environmental Protection (NJDEP) notifies beekeepers of pesticide sprays in the area if the spraying meets certain criteria. This is accomplished by checking the last box in the “Voluntary Information” section on the Apiary Registration Form section, when you register your hives at: [https://www24.state.nj.us/AG\\_Apiary/ApiaryApp](https://www24.state.nj.us/AG_Apiary/ApiaryApp)

**\*Assemble and paint the equipment** you will need this season

**\*Check and clean all equipment.** Clean your hive and all other beekeeping tools. Clean your smoker and check the bellows. This time of year and as needed, clean the creosote out of your smoker with a hand-held blow torch. Working outside away from fire hazards, use the flame from the torch to burn off creosote in the smoker chamber, then wire brush the lid so it closes easily. Now is a good time to launder and patch gloves, jackets, or coveralls as needed.

**\*Continue monitoring food stores in all colonies.** Only feed if the hives are light and need the food. If you began supplemental feeding in January, you must continue to feed until bees are bringing in their own food. Now is the time for pollen patties, if using. Discontinue once fresh pollen is readily available.



### Local Bees for Sale

Internet drawing

Name	Contact info	County	Nucs
Josue Feliciano	<a href="mailto:josuefeliciano@ymail.com">josuefeliciano@ymail.com</a> 856-982-8707	Camden	+ nucs/queens
Joel Sternin	856-248-0233	Burlington, Camden	+
Rob/Denise Dietrich	R: 856-649-9519 D: 215-901-3199	Gloucester, Camden	+

# SJBA Resources



Photos by Nicole Mazzitelli



Above: Tim Schuler  
 Left— Upper row: (from left) Ned Morgan, Dave Elkner, Lou Favieri  
 Left— Bottom Row: (from left) Denise Dietrich, John Ruhl, Kelly Coughlan, Beth Ann Hall, and Bill Lore

## South Jersey Branch of NJBA 2022 Current Executive Board Members

<u>Title/Committee chair</u>	<u>Name</u>	<u>Phone</u>	<u>Email</u>
President	Beth Ann Hall	609-517-4272	sjbeecharmer@gmail.com
1 <sup>st</sup> Vice President	John Ruhl	609-381-7857	1674@comcast.net
2 <sup>nd</sup> Vice President	Bill Lore	856-392-0197	williamlore29@gmail.com
3 <sup>rd</sup> Vice President	Tim Schuler	856-498-0558	tim.schuler@comcast.net
Secretary	Kelly Coughlan	856-981-2042	kelcoughlan@comcast.net
Treasurer	Louis Favieri	856-889-7966	loudiolus@gmail.com
1 <sup>st</sup> Past President	Dave Elkner	609-703-9323	delkner@yahoo.com
Publicity/Newsletter	Denise Dietrich	215-901-3199	das6594@aol.com
Education	Ned Morgan	856-453-9345	Ned.Morgan@comcast.net
Auditing	Tim Schuler	856-498-0558	tim.schuler@comcast.net
Nominating	Dave Elkner	609-703-9323	delkner@yahoo.com

### An SJBA Introductory Beekeeping course is planned for Spring 2023.

Six online classes will be held on Saturday mornings, February 25 and March 4, 11, 18, and 25, and April 1.

A fall schedule will be planned, as well September 30, October 7, 14, 21, 28 and November 4. These courses fulfill the regulatory requirements of the State of New Jersey for beekeeper education. The course will cover: Honey bee biology and life cycle, Selecting hive components, Setting up an apiary, Purchasing honey bees, Honey bee diseases and pests, Honey harvesting, and much more. Ned Morgan is the course coordinator and one of the instructors. Tuition is \$125 per person and includes the text, The Beekeeper's Handbook 5th edition, by Diana Sammataro and Alphonse Avitabile. Three scholarships are available for students

17 to 21 years old. To obtain more information on the course, the scholarship, or registration:

contact: Ned Morgan at [Ned.morgan@comcast.net](mailto:Ned.morgan@comcast.net).



# Equipment for Rental



**SJBA equipment available for SJBA members to borrow. Main equipment is seen below.**

To borrow: Please contact: 1) Dave Elkner, 2) Ned/Doris Morgan, or 3) Rob/Denise Dietrich  
(see executive board for contact information) or Doris Morgan at [doriskmorgan@comcast.net](mailto:doriskmorgan@comcast.net)

## 3 Tangential Extractors

- Mann Lake HH-160
- includes leg kit
- Holds 3 deep, 3 medium or shallow frames

# 1, 2, or 3



## Solar Wax Melter

#3



## 1 Radial/Tangential Extractor

Includes leg kit

### (1) Maxant 3100H

- Holds 9 frames
- #1



Branding Iron: Model 2100 Porto pro with Branding character kit and carrying case

#1



### (3) Uncapping Tanks

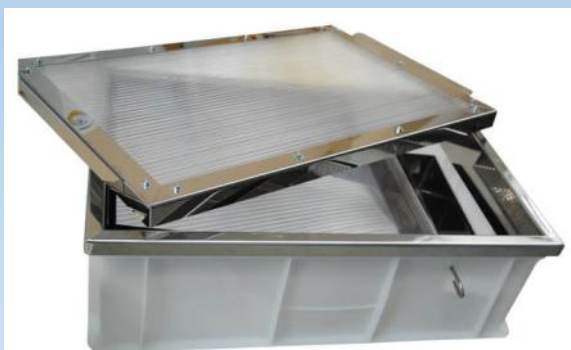
#1, 2, or 3



cappings scratchers

#1, 2, 3

Solar Wax Melter from Betterbee with stand # 1



+







# NJBA & Bee-Awareness around the region



## Around the State

**NJBA website:** [www.njbeekeepers.org](http://www.njbeekeepers.org)  
**NJ bee registration:** <https://www.nj.gov/agriculture/divisions/pi/prog/beeinspection.html>

**Swarm Collectors' link:**  
<http://cjba.njbeekeepers.org/swarms.htm>

**County Health Departments:**  
[www.state.nj.us/dep/enforcement/county.html](http://www.state.nj.us/dep/enforcement/county.html)

**DEP Pesticide Control register to be notified when licensed applicators spray near your backyard:** [www.state.nj.us/dep/enforcement/pcp/bpo-bee.htm](http://www.state.nj.us/dep/enforcement/pcp/bpo-bee.htm)

**Report Pesticide Damage to:**  
Nancy Santiago, Agriculture & Bees ,609-984-6914 or Mike McConville, Bureau Chief, Pesticide Compliance, Main office #: 609-984-6568  
After hours call the DEP Environmental Hotline: 1-877-927-6337 (1-877-WARN DEP)  
*Mention that the report is a suspected bee kill from pesticides.*

**NJ Farm Bureau:** <https://njfb.org/>

**Meghan McConnell**

**NJ State Apiarist**

Email: [Meghan.McConnell@ag.nj.gov](mailto:Meghan.McConnell@ag.nj.gov)

Call or text: 609-331-1229

Main Office: 609-406-6945

**NJ Department of Agriculture, Division of Plant Industry**

**South Warren & Market Streets, PO Box 330**

**Trenton, NJ 08625**

## Around the Country

**Bee Informed Partnership ( BIP)**  
Sentinel Hive Program, research, surveys, etc.  
<https://beeinformed.org/>

**USDA Bee Lab**  
Research  
<https://www.ars.usda.gov/northeast-area/beltsville-md-barc/beltsville-agricultural-research-center/bee-research-laboratory/>

**USDA Conservative Reserve Program**  
Sign-ups from Jan. 4, 2021 to Feb. 12, 2021  
<https://www.fsa.usda.gov/programs-and-services/conservation-programs/conservation-reserve-program/index>

**Eastern Apiculture Society (EAS)**  
Education

<https://www.easternapiculture.org/>

**American Beekeeper's Federation (ABF)**

Represent beekeeping industry

<https://www.abfnet.org/>

## **Connect with fellow beekeepers on Facebook:**

South Jersey Beekeepers Assn. page:

[www.facebook.com/groups/sjba1/](http://www.facebook.com/groups/sjba1/)

Jersey Cape Beekeepers Assn.

<https://www.facebook.com/groups/JCBAmail/>

Mid-State Beekeepers

<https://www.facebook.com/groups/235075960007806/>

Many Beekeeping organizations have Facebook pages, which is a great way to share observations and experiences and ask questions. Communication is instant -- no waiting for a monthly newsletter!